

All About Reception

Meet your new **Reception** team for September 2025



Vision and Values



Learning is not just about facts, it's about developing qualities and characteristics
We reinforce our vision and 9 values in lessons and assemblies
Please support with this at home



Expectations in Reception - helping to prepare your child is key

BE
READY



BE
RESPECTFUL

BE
SAFE



Ready: looking at my teacher; listening carefully; sitting nicely

Respectful: helping others; using kind words; sharing and waiting my turn

Safe: kind hands; walking sensibly; tidying up toys



Meet the staff



- ☐ **Miss Noble**
Cherry Class Teacher and Year Group Leader
- ☐ **Miss Butler**
Fir Class Teacher
- ☐ **Miss Craw**
Maple Class Teacher
- ☐ **Mrs Edgoose**
Reception teacher
- ☐ **Teaching Assistants**
Work across the phase
- ☐ **Friends of Chase Bridge**
– class rep
to be announced!



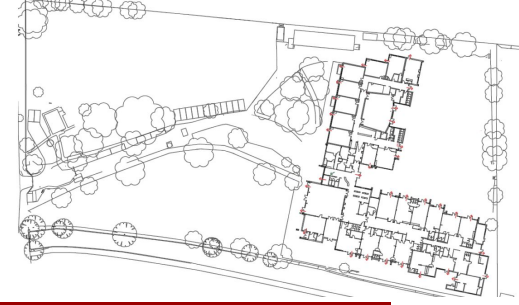
Uniform and school bags

Please refer to the uniform policy and remember that:

- ❑ **No jewellery** should be worn
apart from a plain watch and small stud earrings
- ❑ **Plain black velcro school shoes**
(no boots or sport shoes) & school socks
- ❑ **Long hair** should be tied up
no fussy hair accessories or shaved patterns
- ❑ **PE kit** worn to school on your child's PE day -
Monday
- ❑ **Named bags and water bottles**
Chase Bridge book bag



Start of the day

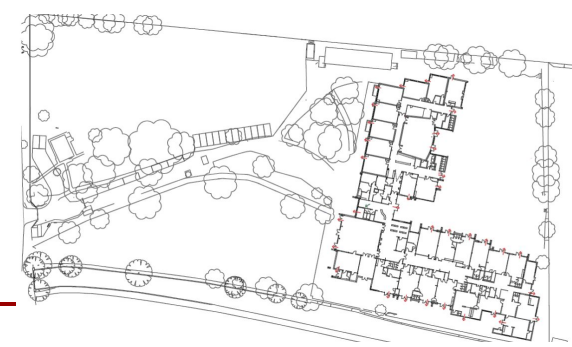


- ☐ Children will start school at 8.50am.
- ☐ Children will line up with their class teacher in the Chase Hall.
- ☐ Parents will stay on the terrace and children will walk into the hall to their class teacher to line up.
- ☐ To avoid congestion, we ask that you please leave the school site as soon as your child is with their class teacher.



End of the day

- ☐ Children will finish school at 3.20pm.
- ☐ Children will be dismissed from the Chase Hall.
- ☐ Parents will wait on the terrace area and the teacher will dismiss the children to parents.



Our Reception topics

All our curriculum details are available on the website:

<https://www.chasebridge.richmond.sch.uk/our-classes/eyfs>



Reading

The children will bring home two types of books:

A sharing book. Your child will not be able to read this on their own. This book is for you both to read and enjoy together.

A reading practice book. This will be at the correct phonic stage for your child. They should be able to read this fluently and independently.



The year ahead

- ☐ Focus on settling in well and learning the rules and routines
- ☐ Welcome disco
- ☐ Planetarium visit
- ☐ Christmas Nativity Show
- ☐ Bocketts Farm visit
- ☐ High street bus trip
- ☐ Brooklands Museum trip
- ☐ Sports Day



Lunches

You will be sent a Google form by the office so that you can select your child's lunches.

Please look at the lunch menu and discuss the options with your child.

<https://www.chasebridge.richmond.sch.uk/school-life/useful-information/school-lunches>



Home-school links

Tapestry is our primary platform for keeping in regular contact with you about your child's learning. Please activate your account when you are sent an email in September.

We will use Tapestry to:

- ☐ enhance the learning at school
- ☐ provide helpful announcements/reminders to families and children
- ☐ celebrate awards and achievements
- ☐ build a strong partnership between home and school



How you can help in school

Can you ...

- ☐ Help in class?
- ☐ Listen to readers?
- ☐ Volunteer in our library?
- ☐ Help on a school trip?
- ☐ Share your expertise with the children?
- ☐ Be a mystery reader?

Please make sure you talk to your class rep. and/or teachers and attend one of our **new helper induction sessions.**



Transition

- ☐ **Stay and Play - Tuesday 8th and Thursday 10th July 3:30pm - 4:00pm**
- ☐ **Home Visits for families new to Chase Bridge - Wednesday 3rd – Friday 5th September**
- ☐ **School Visits for children at Chase Bridge Nursery - Wednesday 3rd – Friday 5th September:**
- ☐ **Monday 8th September - Thursday 11th September:** children will be allocated a morning or afternoon session.
- ☐ **Friday 12th September onwards:** all children will be at school for their full-time hours and they will begin having lunch at school.
- ☐ **Friday 12th September PM:** To celebrate the children's first day, you are invited to come and join them for a picnic from 2pm where you will have the opportunity to get to know other Chase Bridge families.



Holiday 'get ready' list

Here are some suggestions of ways to help your child transition to starting Reception in September.

Practise taking jumpers and coats on and off.

Recognising their name.

Talking positively about school.

Toilet training and washing hands.

Choose it, use it and put it away.



Any questions?

Video: Day In The Life

[Welcome to Reception - Chase Bridge Primary School](#)

Packs - school menu, school milk, uniform, information for starting, how to encourage independence and “This Is Me” book



Admissions and Arbor

Admission Form-
*completed ASAP if you
have not already*

Reception 25 to 26



Download Arbor - *our
all-in-one parent
information app*

Arbor Android



Arbor iOS



Arbor Website

