

# All About Year 1

Meet your new team for September 2025



# Meet the staff

---



- Mrs Demetriou  
Willow Class Teacher and  
Year Group Leader
- Miss Bishop  
Oak Class Teacher
- Miss Harland  
Apple Class Teacher
- TBC  
Year 1 Teaching Assistants
- Friends of Chase  
Bridge – class rep



# Vision and Values



We run our Chase Bridge vision throughout our curriculum and practice, with an achievement award given weekly for displaying, strengthening and role modelling our core values. Please support our home-school partnership through praising and encouraging these values at home too





# School Rules

---

BE  
**READY**



BE  
**RESPECTFUL**

BE  
**SAFE**



Through our transition, we will support children with Being Ready for the expectations of their new year group, including Being Respectful and Being Safe in their new environment and with their new teachers. A unified message greatly supports children's understanding and development; we thank you for your support with our behaviour expectations.



# Uniform and school bags

---

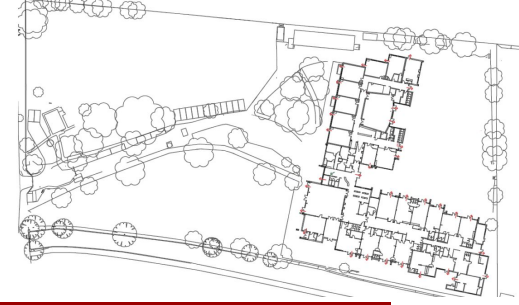
Please refer to the uniform policy and remember that:

- **No jewellery** should be worn  
apart from a plain watch and small stud earrings
- **Plain black school shoes**  
(no boots or sport shoes) & school socks
- **Long hair** should be **tied up**  
no fussy hair accessories or shaved patterns
- **PE kit** worn to school on your child's PE day -  
**Thursday**
- **Bags**  
plain, compact/sensible small size



# Start of the day - 8:45am

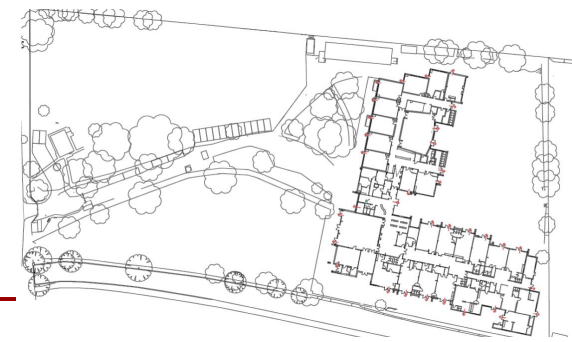
---



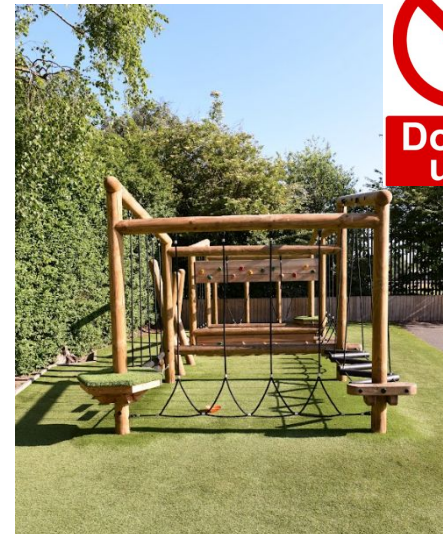
- ☐ Children will start school at 8.45am
- ☐ Children will line up with their class teacher in the playground.
- ☐ Parents will stay behind the MUGA and children will walk towards their class teacher to line up.
- ☐ To avoid congestion, we ask that you please leave the school site as soon as your child is with their class teacher. The gates to the playground will be closed from 8:55am
- ☐ Please be mindful that both trim trails are not to be used before or after school - *we appreciate your support with this.*



# End of the day - 3:15pm



- ☐ Children will finish school at 3.15pm
- ☐ Children to be collected from the playground
- ☐ Parents will wait behind the MUGA area and the teacher will dismiss the children to parents.
- ☐ As pick up points are used for different year groups at their end of day time, all parents are expected to leave the school site as quickly as possible to ensure a safe and calm environment.
- ☐ Please be mindful that both trim trails are not to be used before or after school - *we appreciate your support with this.*



# Our Year 1 topics

All our curriculum details are available on the website:

<https://www.chasebridge.richmond.sch.uk/our-classes/year-1>





# Our Year 1 topics

---

All our curriculum details are available on the website:

<https://www.chasebridge.richmond.sch.uk/our-classes/curriculum>

**Henry VIII:**  
Henry VIII and  
Hampton  
Court Palace

**Old Toys New  
Toys:** materials  
and their  
properties

**Who do you  
think you are?:**  
using our five sense  
to learn about the  
world

**Plant  
Detectives:** wild  
and garden  
plants and  
deciduous and  
evergreen plants

**Wonderful  
Weather:**  
changes across  
the 4 seasons

**The Animal  
World:** birds,  
mammals, fish,  
reptiles and  
amphibians



# The year ahead

---

- Curriculum based trips

Hampton Court Palace, Chertsey Museum Toy Workshop, Kew Gardens, Weather Drama Workshop, author event at The Live Room & Church Visit.

- Phonics Screening Check in June 2026

- Year 1 Assembly

- Christmas performance

- Sports Day



# Being prepared

---

- ☐ A water bottle



A small pencil case containing ...

- ☐ a pencil,
- ☐ pencil sharpener with pot,
- ☐ rubber,
- ☐ glue stick,
- ☐ colouring pens and pencils

Please can every child also donate a tissue box to the school at the start of term.



Read our Online Safety overview - and discuss with your child (age appropriate): <https://www.chasebridge.richmond.sch.uk/online-safety>



# Lunches

---

Children will be expected to choose their own lunch option each morning when we do the register.

Please look at the lunch menu and discuss the options with your child.

<https://www.chasebridge.richmond.sch.uk/school-life/useful-information/school-lunches>





# Home-learning



At Chase Bridge, we believe in setting meaningful and purposeful home-learning opportunities that helps children to consolidate the core skills they have learnt at school.

KS1 weekly expectations:

- ☐ **Reading** - minimum of 10 minutes a day
- ☐ **Maths Shed** - set bi-weekly
- ☐ **Spelling Shed** - set once a week + a weekly spelling quiz  
Autumn 2
- ☐ **Seesaw** - set bi-weekly to consolidate, revisit or preview core learning linked with a broad range of curriculum subjects.

Homework policy:

[https://www.chasebridge.richmond.sch.uk/ckfinder/userfiles/files/Policies/Homework%20Policy%20Update%20Autumn%202021%20\(2\).docx%20\(1\).pdf](https://www.chasebridge.richmond.sch.uk/ckfinder/userfiles/files/Policies/Homework%20Policy%20Update%20Autumn%202021%20(2).docx%20(1).pdf)



# Home-school links



Seesaw is our primary platform for keeping in regular contact with you about your child's learning. If you haven't connected yet, please contact the office where they will be happy to send an invite request.

## We will use Seesaw to:

- ☐ set weekly learning tasks for children in Years 1 - 6 that focus on reinforcing learning from the week, extending learning further, and/or previewing upcoming learning
- ☐ enhance the learning at school
- ☐ provide helpful announcements/reminders to families and children
- ☐ inform families of the weekly learning and how they can support
- ☐ celebrate awards and achievements
- ☐ Build a strong partnership between home and school

*Seesaw should **not** be used to send messages **regarding incidents at school, concerns to raise, medical needs or absence requests**. Messages are checked once a week and are used primarily for the teacher to contact parents to share learning celebrations and expectations; please email the info account if you wish to contact the teacher about any of the above.*



# How you can help in school

---

## Can you ...

- ☐ Help in class?
- ☐ Listen to readers?
- ☐ Volunteer in our library?
- ☐ Help on a school trip?
- ☐ Share your expertise with the children?

Please make sure you talk to your class rep. and/or teachers and attend one of our **new helper induction sessions.**



# Reading

---

The children will bring home two types of books:

**A reading practice book.** This will be at the correct phonic stage for your child. They should be able to read this fluently and independently.

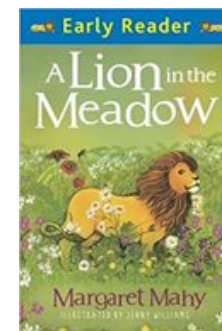
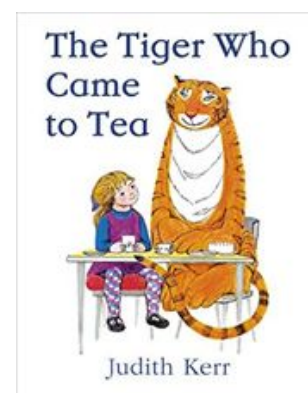
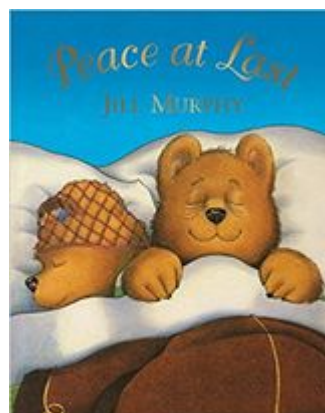
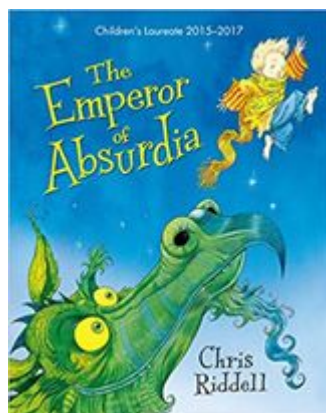
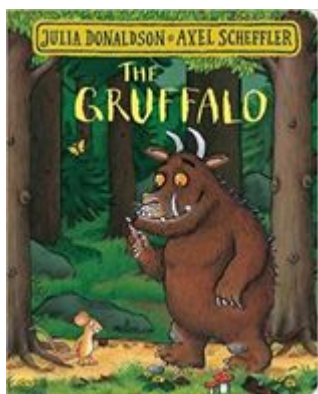
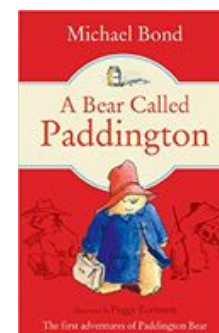
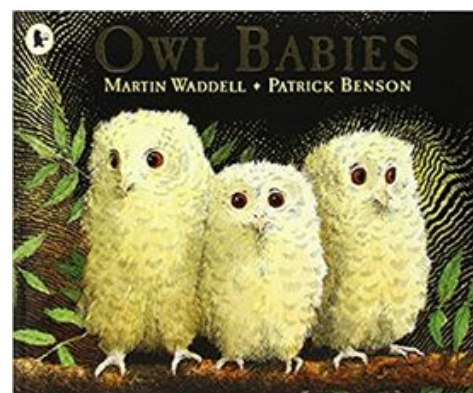
**A sharing book.** Your child will not be able to read this on their own. This book is for you both to read and enjoy together.





# Year 1 holiday reading list

Here are some suggestions of great books that you could read over the holidays. Why not link this to the **Summer Reading Challenge at your local library** where you have to read six books?



You can find more recommended books on: [www.schoolreadinglist.co.uk](http://www.schoolreadinglist.co.uk)



# Move Up Morning

- The children will spend the morning meeting their new teacher and getting to know their new classroom on **Wednesday 16th July.**

# Meet Your TEACHER



# See you in September!

---

